

PL NC 100 FT

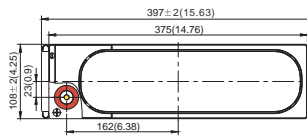
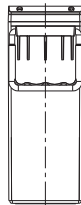
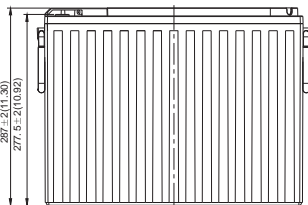
PL NC 100 FT is a Pure Lead, Long Cycle battery with excellent performance for applications in unstable AC power system. It offers long cycle life with special paste formula, as well as optimized manufacturing process. With high quality AGM separators prevents micro short circuit and extends cycle life. Design according with IEC 60896-21/22:2004



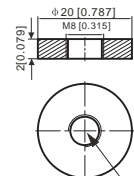
Physical Characteristics		Technical Characteristics	
Nominal Voltage	12V	Internal Resistance	Approx. 4,5 mΩ
Nominal Capacity (20hrs)	88Ah at 180V/cell	Capacity affected by temperature	40C 103%
Dimension LxWxH	397x 108 x 287 +/-2mm		25C 100%
Weight	Approx 31,0 kg	0C 86%	Max Discharge Current
Standard Terminal	T11	1200A (5sec)	

Dimensions

Unit: mm



Terminal: T11



Depth 18mm [0.71 inches]

Container Material : A.B.S. UL94-HB

Constant Current & Power Discharge Characteristics: Amperes (25C) / Watts/cell (25C)

Final Voltage	Time	10min	15min	20min	30min	45min	1Hr	2Hr	3Hr	4Hr	5Hr	8Hr	10Hr	20Hr
1,85V/cell	A	124.8	114.1	101.0	76.8	56.5	46.1	27.5	20.1	15.9	13.3	9.33	7.81	4.19
1,80V/cell	A	140.9	123.7	107.9	82.2	61.3	49.8	29.2	21.1	16.7	14.0	9.77	8.20	4.40
1,75V/cell	A	152.8	130.9	113.3	87.0	63.9	51.4	29.8	21.5	16.9	14.1	9.88	8.29	4.45
1,70V/cell	A	165.3	139.4	118.3	89.9	66.0	52.7	30.3	21.7	17.1	14.3	9.96	8.35	4.48
1,67V/cell	A	174.4	145.6	122.0	92.6	67.7	53.9	30.7	21.9	17.2	14.4	10.03	8.40	4.51
1,60V/cell	A	182.6	151.0	125.7	95.0	69.0	54.9	31.1	22.2	17.5	14.6	10.12	8.45	4.53
1,85V/cell	W	237.3	218.4	194.3	149.4	111.7	91.3	54.9	40.3	32.0	26.8	18.90	15.88	8.55
1,80V/cell	W	263.8	233.5	205.5	158.9	120.5	98.2	58.2	42.2	33.4	28.1	19.73	16.61	8.94
1,75V/cell	W	283.1	244.8	214.0	166.8	124.7	100.7	59.0	42.7	33.7	28.3	19.90	16.75	9.02
1,70V/cell	W	302.7	258.3	221.3	171.1	128.0	102.7	59.6	43.0	34.0	28.5	20.00	16.82	9.05
1,67V/cell	W	314.2	266.4	226.5	175.4	130.7	104.6	60.1	43.3	34.2	28.7	20.11	16.87	9.08
1,60V/cell	W	322.1	271.2	229.5	177.7	131.7	105.7	60.5	43.5	34.4	28.9	20.13	16.88	9.09