

# POWER TO THE PEOPLE

CHAMELEON SMALL CELLS  
POWER SOLUTIONS



# POWER FOR TOMORROW'S TELECOM INFRASTRUCTURE

People's hunger for data capacity seems insatiable. Your job is to offer people the freedom they take for granted - to access and process any kind of information anywhere, at any time. So you need to expand your 4G/LTE networks - fast.

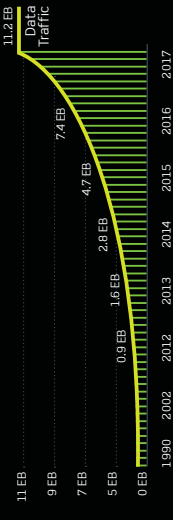
Chameleon small cells power from Eltek gives you the power you need to succeed.

“Say you want a revolution  
We better get on right away  
Well you get on your feet  
And out on the street”

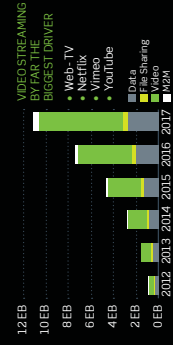
- John Lennon

## CHAMELEON THE FAST WAY TO GREAT POWER FOR SMALL CELLS

EXPONENTIAL GROWTH IN DATA TRAFFIC



DATA TRAFFIC BY APPLICATION



# HIGH PERFORMANCE FAST DEPLOYMENT

Chameleon combines very high performance, IP-65 housing and proven reliability with plug-and-play installation.

## CHAMELEON STANDALONE 48/650 HE 20 ms AND 200 ms

The Chameleon 48/650 HE meets the challenges faced by installers of LTE/4G networks. It is small, lightweight, quick to install and provides the power required. The Chameleon has a discreet exterior, designed to blend into most environments.

The Chameleon 48/650 HE is a standalone rectifier with 20 or 200 ms hold-up time. Just enough to manage normal mains disruptions without dropping the output. It is also available in a universal input version accepting AC and DC input up to 400V.

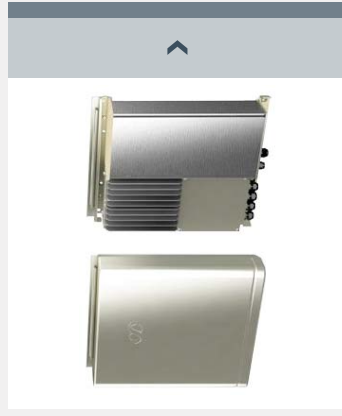


### FEATURES

- Universal input version 85-300 VAC, 200-400VDC
- Surge protection on input and output
- 20 or 200 ms hold-up time
- Heat sink for optimal passive cooling
- IP 65 plug and play connectors
- High Efficiency (HE)
- Wide temperature range
- Pole or wall mount
- Global compliance (CE, UL)
- Telecom specifications

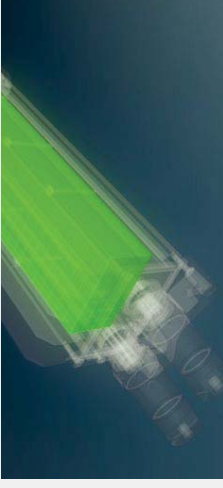
## CHAMELEON SYSTEM 48V 1300W 7AH

If monitoring and battery backup is needed, Chameleon 48V system is the perfect choice. This is a complete small cell power system consisting of a power core unit with two rectifiers, easy accessible battery and load distributions, advanced control and monitoring, and a battery unit – all contained in a small compartment.



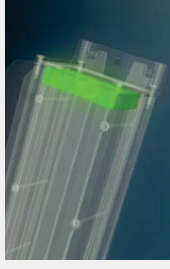
In addition to more power and the features mentioned above, the Chameleon system can offer a complete ~30mm\* backup system with:

- Temperature compensated charging
- Low voltage battery disconnect
- Advanced monitoring:
  - Energy logs
  - Battery
  - Performance
  - Temperature
- Free vented battery compartment (\*30 mm. at 600W load and 7Ah batteries. Batteries not included)



### HE TECHNOLOGY INSIDE

At its core, Chameleon benefits from cutting-edge HE technology that defines the standard in power conversion. Based on the industry-leading rectifier module Flatpack S, its compact design ensures maximum power density.



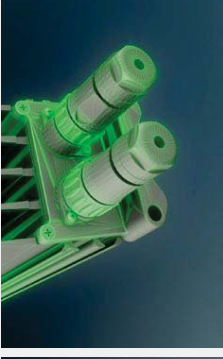
### 20 ms HOLD-UP TIME

To manage normal mains disruptions without dropping the output.



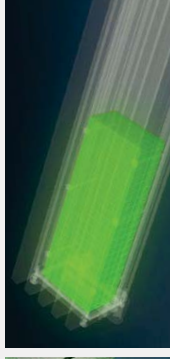
### 380VDC READY

Special universal input version, designed to manage normal AC input and DC up to 400VDC.



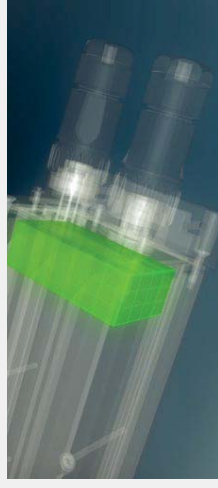
### PLUG AND PLAY

With IP 65 connectors, the unit is completely sealed from outside exposure. It's all plug and play - your Chameleon small cells power will be up and running in no time.



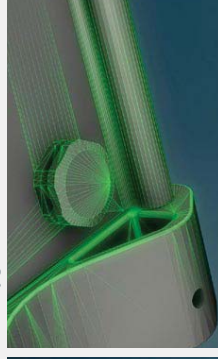
### 200 ms HOLD-UP TIME

This special version can manage loss of mains for up to 200 ms without dropping the output. This is sufficient to cover a very large portion of blackouts in modern electricity grids.



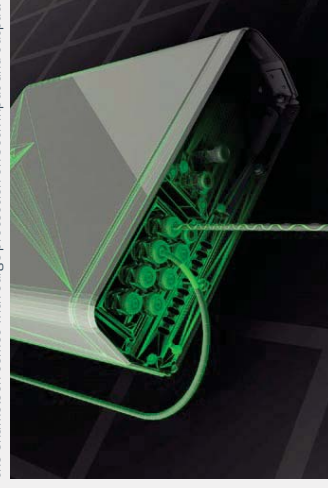
### SURGE PROTECTION

To ensure stable operation under varying, harsh electrical conditions, the Chameleon comes with surge protection on both input and output.



### VENTILATION

A Gore™ vent plug provides ventilation.



### THE CHAMELEON SYSTEM

More power, battery backup, advanced system control and monitoring combined with easy connection, light weight and easy mounting ensures fast deployment of your advanced small cells network.



### IP 65 HOUSING

The pressure tested anodized aluminum housing completely seals the unit and will withstand the most extreme weather conditions. Heat sink provides optimal passive cooling.

### CHAMELEON - HOW DOES IT WORK?



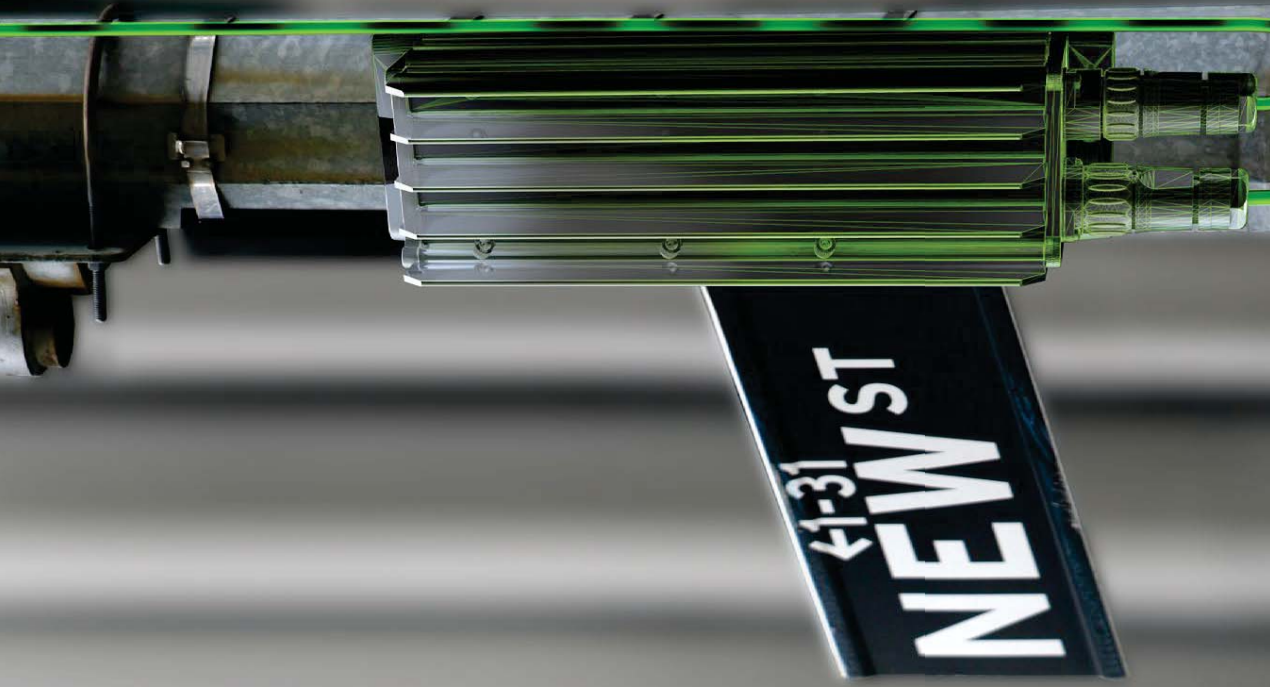
Take a look at our Chameleon video. It shows you all the benefits and how easy it is to install the Chameleon small cells power from Eltek.

Don't have any QR application installed? Download it from Apple Store or Google play. You will also find this video on our web page: [www.eltek.com/chameleon](http://www.eltek.com/chameleon).

# CHAMELEON POWER SOLUTIONS BLENDING IN EVERYWHERE

People want capacity, not visual pollution. Your challenge as a network builder or owner is to provide an optimal service through deployment of sufficient equipment close to people, without having a significant visual impact in the city streets, shopping malls or sports arenas.

The Chameleon blends in with the environment with its compact and neutral exterior and a powerful interior.



## THE POWER CONVERSION SPECIALIST FOR MORE THAN 40 YEARS

Eltek has more than 40 years of experience as a power conversion specialist. Driven by a strong ambition to push the frontiers of technology, our hallmark has always been an ability to develop power conversion products that set the industry standard when it comes to efficiency, power density and flexibility.



## HIGH EFFICIENCY

Eltek's unique power conversion technology is the result of decades of intensive research and technical breakthroughs, and has defined "High Efficiency" in the power industry for years. With market-leading conversion efficiency, the power loss during use is minimized, with resulting significant cost savings and reduced environmental impact.

## EXPERIENCE THE POWER.

At Eltek, we are power experts with a sharp focus; to develop and provide our customers all over the world with the greatest power solutions available for applications used in an industrial context - where stable, safe and efficient supply of power is crucial.

This has been our passion and motivation for more than 40 years: to innovate and lead the way in power conversion and control. Today we help our customers optimize and safeguard operation of business-critical equipment, reduce their carbon footprint, while at the same time reduce their total cost of ownership of power supply equipment.

Nordic by birth, we have grown to service all countries and cultures, offering the best global technology and solutions matched to local requirements.

The combination of superior expertise, advanced solutions, support and service, makes it possible for our more than 2000 passionate and proactive power experts world-wide to provide our customers with a unique, powerful experience.

[www.eltek.com/chameleon](http://www.eltek.com/chameleon)  
[chameleon@eltek.com](mailto:chameleon@eltek.com)

### Eltek Publications

always updated, all in one place

Get easy access to brochures, our product finder, films and other useful information. Download our app by searching the App Store or Google Play for Eltek.



 Eltek AS

 @Eltekcpr

 @EltekCorp

 Eltek AS

 Eltekcpr